

BIKE solutions



Official
Supplier
2019



www.texa.com

TEXA

Specialists in multi-brand diagnostics

Electronic injection, ABS, chassis management, electronic transmission and suspensions, inertial platform, LED headlights, TPMS, cruise control, instrument cluster, switch units, keyless system, infotainment, windscreen adjustment.

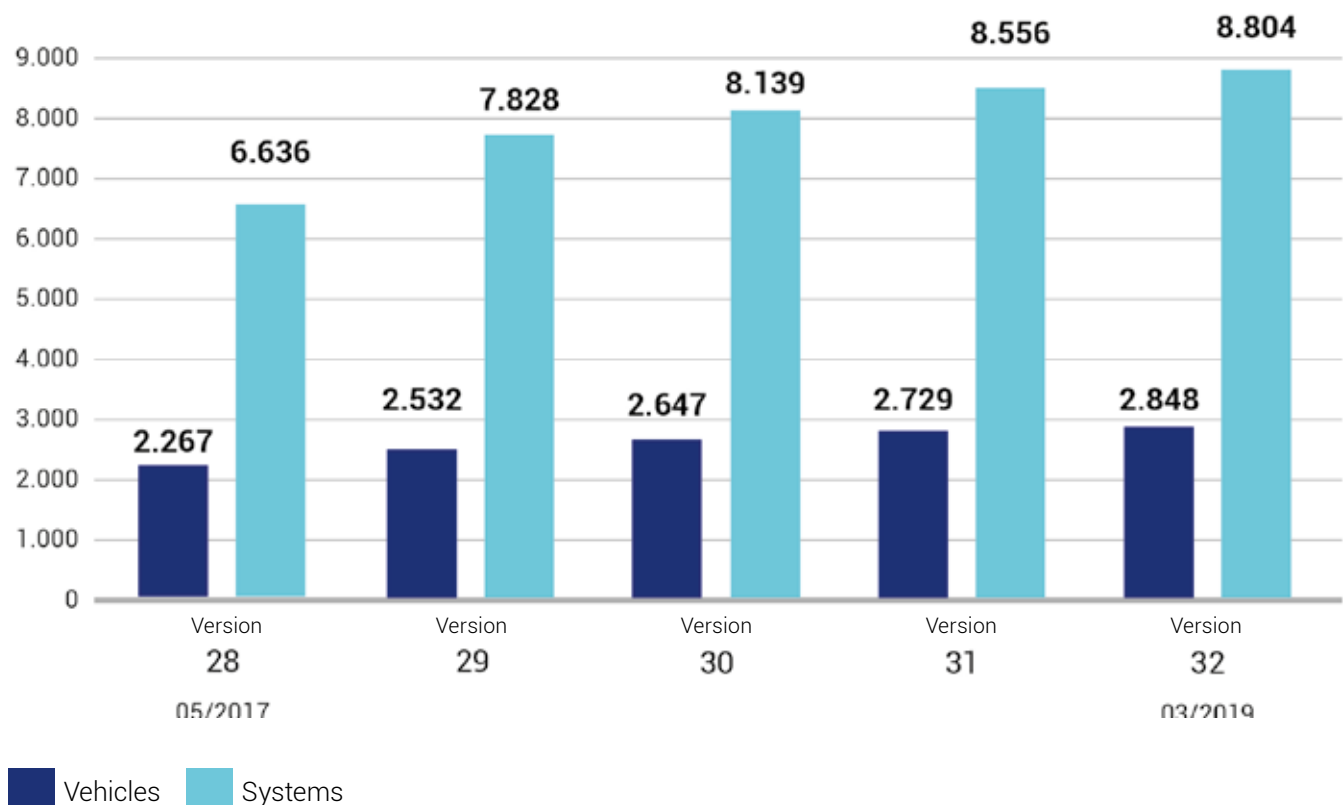
It is unthinkable for a multi-brand workshop to carry out repair interventions on modern motorcycles without the support of valid electronic diagnostics to detect errors, adapt control units, activate components, perform adjustments, reset values.

Not owning an appropriate tool means being destined to exit the market, all the more so as the sophisticated electronic driver assistance systems will spread in the near future.

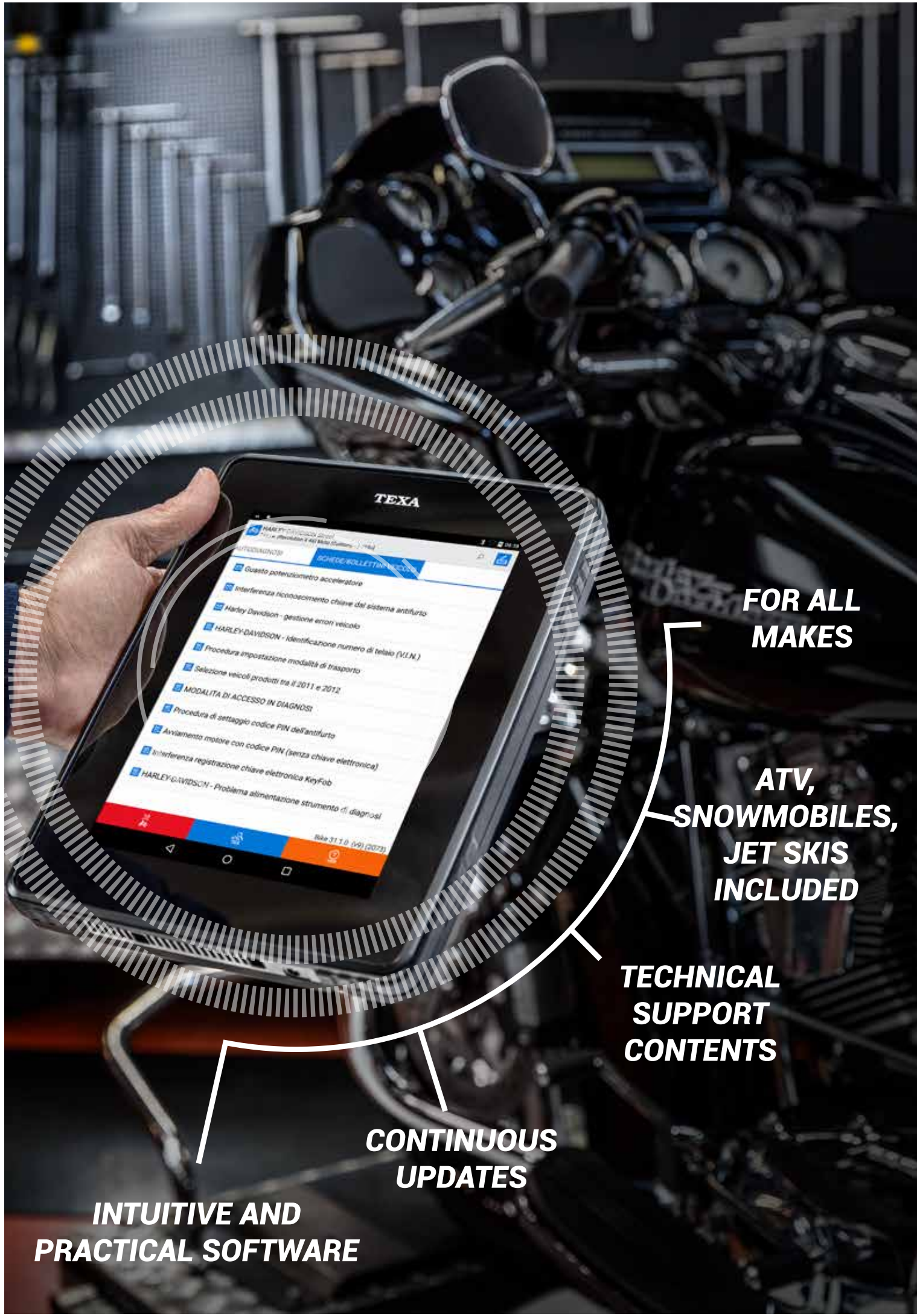
TEXA's diagnostic tool allows mechanics to solve more faults in less time and with certainty. To improve their service to customers and the workshop's accounts.

TEXA is constantly studying vehicles in circulation all over the world and continuously increasing its **diagnostic coverage**; through **continuous updates** and software releases, it allows subscribed vehicle repairers to have a tool that covers a very large number of makes, models and systems of **motorbikes, scooters, quad bikes, jet skis, snowmobiles** and **utility vehicles**.

8,804 systems covered for 2,848 vehicles, today **+32%** diagnostic coverage over 22 months



The coverage is based on the selection of: Make and model.



**FOR ALL
MAKES**

**ATV,
SNOWMOBILES,
JET SKIS
INCLUDED**

**TECHNICAL
SUPPORT
CONTENTS**

**CONTINUOUS
UPDATES**

**INTUITIVE AND
PRACTICAL SOFTWARE**

- Questo potenziometro acceleratore
- Interferenza riconoscimento chiave dal sistema antifurto
- Harley Davidson - gestione errore veicolo
- HARLEY-DAVIDSON - Identificazione numero di telaio (V.I.N.)
- Procedura impostazione modalità di trasporto
- Selezione veicoli prodotti tra il 2011 e 2012
- MODALITÀ DI ACCESSO IN DIAGNOSI
- Procedura di settaggio codice PIN dell'antifurto
- Avviamento motore con codice PIN (senza chiave elettronica)
- Interferenza registrazione chiave elettronica KeyFob
- HARLEY-DAVIDSON - Problema alimentazione strumento di diagnosi

The multi-brand product chosen by manufacturers

Thanks to its advanced features, IDC5 BIKE software has been chosen as official diagnostic software by the following manufacturers:

***BENELLI Q.J. - BETAMOTOR
BIMOTA - BROUGH SUPERIOR
DUCATI - FANTIC MOTOR
MOTO MORINI - MV AGUSTA
SWM - SYM ITALIA***

Multi-brand workshops can have the same coverage level as vehicle manufacturers.

**TECHNICAL PARTNER:
ARROW EXHAUST**



The best of diagnostics in a single solution

TEXA's **diagnostic solution** for the BIKE diagnostic environment consists in **AXONE 5**, quick and powerful display unit, and **NAVIGATOR TXB Evolution**, a very robust vehicle interface that is perfect for communicating with every motorcycle.

The two tools interconnect via Bluetooth and communicate with the vehicle's electronic control units, guaranteeing **levels of speed and performance that are simply unrivalled** in the world of multi-brand diagnostics.

TEXA also means great **ease of use and versatility**: in fact, the vehicle interface Navigator TXB Evolution is also **compatible** with **Personal Computers** with a Windows operating system.

AXONE 5



AXONE 5 is the ideal solution for those who wish to have the **utmost diagnosis available on the market** with a limited investment. The diagnostic software **IDC5a makes it quick and intuitive and ensures high performance.**

NAVIGATOR TXB Evolution



Cutting-edge vehicle interface, **expressly developed for the motorbike environment.** Compatible with all the currently existing protocols and with all BIKE diagnostic cables. It also allows recording the **dynamic diagnostic session***

**For the diagnostic tests while moving, carefully read and follow the prescriptions you find at: www.texa.com/test-drive. TEXA S.p.A. is not liable for any damage resulting from an improper and non-compliant use of the indications, sequences and phases indicated in the page mentioned above, in the guide and in the product's user manual.*

Transforming data into solutions

The **IDC5 BIKE** software is **complete, practical** and **intuitive**, extremely quick to access communication with motorcycles and rapid in all diagnostic phases, from the error identification to its solution.

IDC5 BIKE is designed to lead mechanics throughout troubleshooting, from the error identification to its complete solution, practically and safely.

Nominal values associated with the error, technical data sheets, interactive wiring diagrams contain 26 years of experience and thousands of successfully solved problems.



Special adjustments

The IDC5 software offers a wide range of special adjustments that go beyond the ordinary vehicle servicing, such as:

HARLEY-DAVIDSON

- Vehicle configuration change
- Display setting change
- Exhaust valve enabling

DUCATI

- Key adaptation
- Anti-theft enabling / disabling

BMW

- Odometer alignment
- Speed limiter unlock after running-in for S 1000 R (K47), S 1000 XR (K49) and S 1000 RR (K46)

BRP and more besides

- 99 HP limitation adjustment

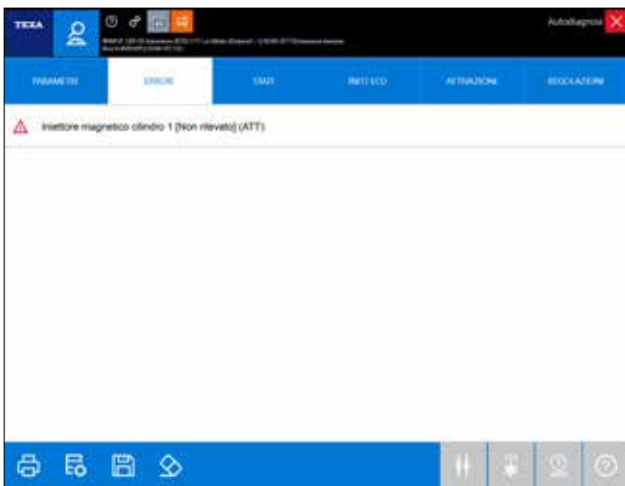
HONDA

- Engine ECU reset

SUZUKI

- CO adjustment

Errors



The Errors page instantly displays all the **errors in the vehicle**, with the related codes and descriptions. From this page, the error **reading** and **clearing** can be carried out in a single click, as well as a **self-diagnosis test** on the selected system.

Data sheets



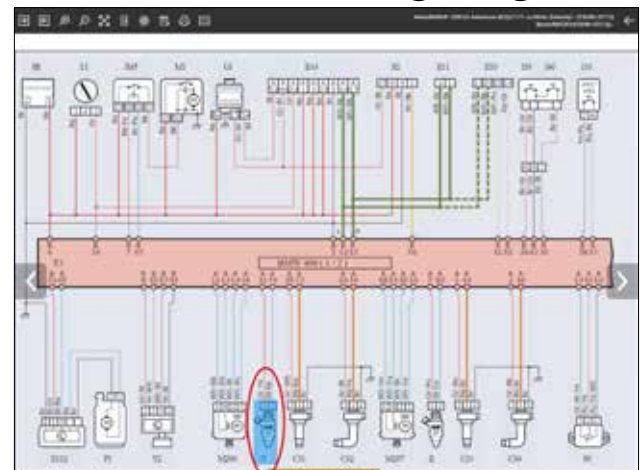
Very accurate **information on the selected vehicle**, including instructions for performing a manual service reset, overviews of specific mechatronic systems and much more.

Nominal values

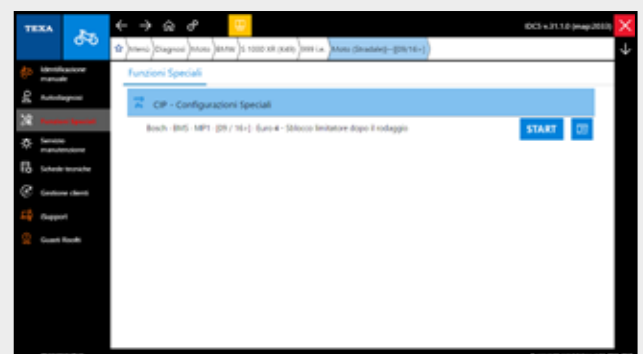
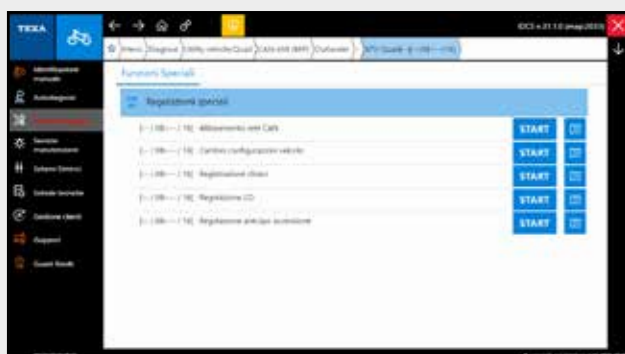
Condizioni di prova	Parametro	Valori di prova	Esito
Componente collegato Centralina motore collegata Chiave in posizione "ON" Motore in avviamento	Bk-Ye (pin 29) convertitore centralina motore Wh-Re (pin 39) convertitore centralina motore	> 3.0 V	Valore corretto
Componente collegato Centralina motore collegata Chiave in posizione "ON" Motore in avviamento	Bk-Ye (pin 29) convertitore centralina motore Wh-Re (pin 39) convertitore centralina motore	> 3.0 V	Valore fuori scala

Useful to solve a **fault associated with an error code** detected in self-diagnosis. They provide a tree diagram to solve the fault.

Interactive wiring diagrams



The **animations of the relevant devices** create an interactive map with the flow of input and output signals to/from the control units.



From diagnosis to measurements

TEXA provides mechanics with a series of tools that guarantee a complete, high-quality service to their customers. With TEXA, everything is under control.

TPS2 - Tire Pressure Sensor 2

With its robustness, speed, simple graphics and large display, TPS2 allows successfully carrying out all the operations relating to **tire pressure monitoring**.



TTC - TEXA Tension Controller

It makes sure the timing **belt tension** is correct. Developed to Ducati specifications, it is also indicated for the drive belt on **Yamaha TMAX 530**. The reference values are also provided with the tool.

RCM - Revolution Counter Motorbike

Advanced rev counter designed by TEXA specifically for motorbikes, it uses an innovative directional antenna to measure engine speed with great accuracy. Particularly indicated for all faired motorcycles, where an inductive clamp cannot be used.



GASBOX Autopower

GASBOX Autopower is the **exhaust gas analyser**, homologated by the Italian Ministry of Transport, which measures CO, CO₂, O₂, HC (and optionally NO) values of motorcycles with precision.

Team and technology at your service

Purchasing a BIKE diagnostic solution allows you to access a **complete range of functions and services** that are essential for the complex activity of vehicle repairing, today and in the future, and to remain **up-to-date and constantly in direct touch with TEXA**.



CALL CENTER

Monday to Friday
8.30 - 12.30
14.30 - 18.00

It allows getting in touch with TEXA's customer support centre and receiving **daily assistance by qualified technicians**, with proven experience in repairing vehicles of all manufacturers, who **guide customers step-by-step throughout troubleshooting**. TEXA's Call Center department also makes use of an equipped technical area, where operators can practise troubleshooting on vehicles on a daily basis.



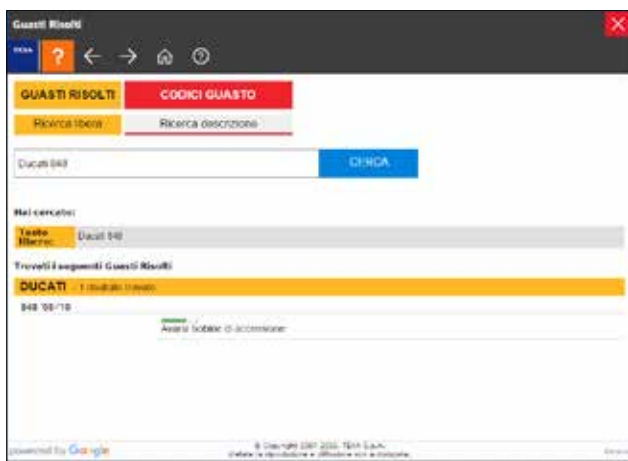
SOLVED PROBLEMS

It allows accessing TEXA databases easily, to search for repair procedures already encountered and registered by our international call centres. Vehicle repairers can access **thousands of practical troubleshooting cases**, tested on site by mechanics all over the world, **24/7**.



TECHNICAL BULLETINS

The annual subscription to the Technical Bulletins service allows **accessing information on frequent problems and repair procedures**, operating principles of a specific electronic-mechanical system, methods to rapidly find a solution to a problem, through documents stored by vehicle, enhanced with easy-to-interpret comparative tables and images.



Check the service access modes and costs with your TEXA retailer.

MOTORBIKES

AJP
APRILIA
BAJAJ
BENELLI
BENELLI (DSK)
BETAMOTOR
BIMOTA
BMW
BOOM TRIKE
BRIXTON MOTORCYCLES
BROUGH SUPERIOR
BUELL
CAGIVA
CAN-AM (BRP)
CFMOTO
CSC MOTORCYCLES
DAELIM MOTOR
DAFRA
DUCATI
FANTIC MOTOR
FB MONDIAL
GAS GAS
GENERIC
GEON
GG TECHNIK
HARLEY-DAVIDSON
HISUN
HM
HONDA
HONDA MONTESA
HUSABERG
HUSQVARNA
HYOSUNG
INDIAN
KASINSKI
KAWASAKI
KEEWAY
KELLER

KSR MOTO
KTM
KYMCO
LAVERDA
MACBOR
MASH
MGK HELLENIC MOTOR
MH
MINSK
MONDIAL
MOTO GUZZI
MOTO MORINI
MV AGUSTA
POLARIS
ROYAL ENFIELD
SHERCO
SHINERAY
SINNIS
STELS
SUZUKI
SWM
SYM
TRIUMPH
URAL
VERVE MOTO
VICTORY
VOXAN
YAMAHA
ZONGSHEN

SCOOTERS

ADIVA
AEON
APRILIA
BENELLI
BMW
CFMOTO
DAELIM MOTOR
DAFRA

DERBI
GILERA
GOES
HONDA
HYOSUNG
KAWASAKI
KEEWAY
KYMCO
MALAGUTI
MBK
PEUGEOT
PIAGGIO
QUADRO
RIYA
SINNIS
SUZUKI
SYM
TGB
VESPA
YAMAHA

QUAD BIKES

ARCTIC CAT
CAN-AM (BRP)
CFMOTO
COLEMAN
GAS GAS
GG TECHNIK
HISUN
HONDA
KAWASAKI
KVN MOTORS
POLARIS
POLARIS DEFENCE
STELS
SUZUKI
TGB
YAMAHA

JET SKIS

HONDA MARINE
KAWASAKI MARINE
SEA-DOO (BRP)
YAMAHA MARINE

SNOWMOBILES

ARCTIC CAT
LYNX (BRP)
POLARIS
SKI-DOO (BRP)
STELS
YAMAHA

UTILITY VEHICLES

ARCTIC CAT
CAN-AM (BRP)
CFMOTO
COLEMAN
GEM
HISUN
HONDA
PIAGGIO VEICOLI
COMMERCIALI
POLARIS DEFENCE
POLARIS RANGER
QUADIX
YAMAHA

MOTOR PUMPS

ROSENBAUER

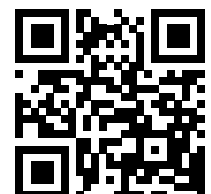
MINICARS

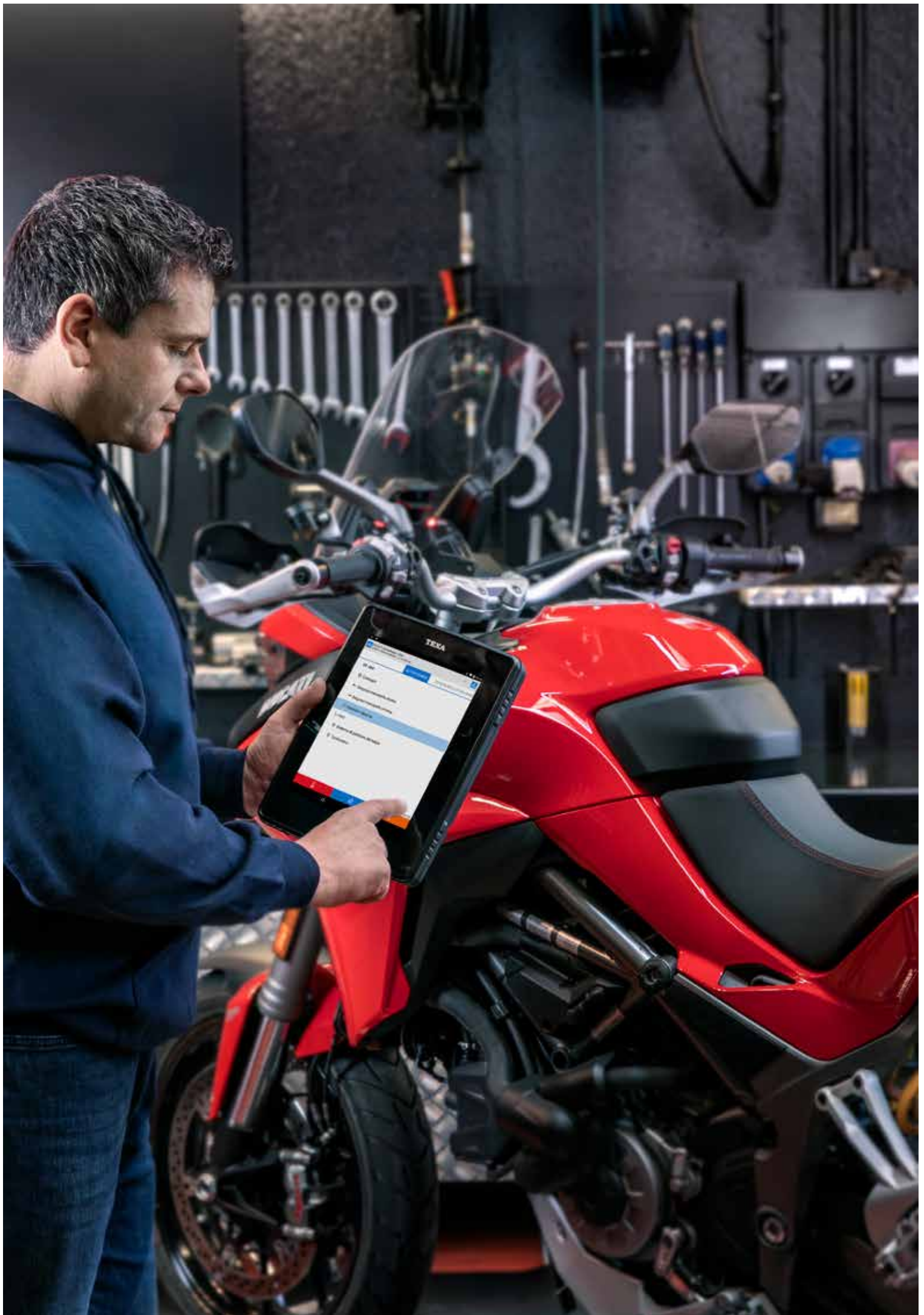
GRECAV

ENGINE

BMW
ROTAX (BRP)

***Check out the coverage of TEXA
products: www.texa.com/coverage***





TEXA: 27 years of excellence

Among the world leaders in multi-brand automotive diagnostics, **TEXA** was the **first company to specialise in the motorbike industry** and today **covers twice as many makes** with respect to its best competitor. It is also the official supplier of prestigious motorcycle manufacturers.

Founded in 1992, and employing today **over 700 people**, TEXA is present with its own subsidiaries in **Spain, Germany, France, United Kingdom, Poland, Russia, United States, Brazil** and in the rest of the world through an extensive distribution network.

TEXA wanted to integrate the extremely prestigious certification **ISO TS 16949**, specific for suppliers of original equipment to the automotive industry, by adjusting its company processes to make them compliant also with the VDA 6.3 standards, specific of German manufacturers.

With **TEXAEDU**, specialised technical training centre, TEXA supports mechanics by **teaching them the skills** required to perform correct diagnoses on new-generation vehicles easily and profitably.

WARNING

The trademarks and logos of vehicle manufacturers in this document have been used exclusively for information purposes and are used to clarify the compatibility of TEXA products with the models of vehicles identified by the trademarks and logos. Because TEXA products and software are subject to continuous developments and updates, upon reading this document they may not be able to carry out the DIAGNOSTICS of all the models and electronic systems of each vehicle manufacturer mentioned within this document. References to the makes, models and electronic systems within this document must therefore be considered purely indicative and TEXA recommends to always check the list of the "Systems that can be diagnosed" of the product and/or software at TEXA authorised retailers before any purchase. **The images and the vehicle outlines within this document have been included for the sole purpose of making it easier to identify the vehicle category (car, truck, motorbike, etc.) for which the TEXA product and/or software is intended.** The data, descriptions and illustrations may change compared to those described in this document. TEXA S.p.A. reserves the right to make changes to its products without prior notice.



facebook.com/texacom



instagram.com/texacom



twitter.com/texacom



linkedin.com/company/texa



youtube.com/texacom



plus.google.com/+TEXAcom

The BLUETOOTH brand is the property of Bluetooth SIG, Inc., U.S.A., and is used by TEXA S.p.A. under license.

Android is a trademark of Google Inc

Copyright TEXA S.p.A.
cod. 8801294
05/2019 - Inglese - V.2.0



TEXA S.p.A.
Via 1 Maggio, 9
31050 Monastier di Treviso
Treviso - ITALY
Tel. +39 0422 791311
Fax +39 0422 791300
www.texa.com - info.it@texa.com